

X10206 – Phase Angle Electronic Heat Switch – Up to 15A



INTRODUCTION

The switchable phase-angle power regulator is a robust and compact unit, ideal for controlling single-phase mains-driven loads. The standard QLC units are for 230V supply, with a three position and off control switch. The large triac enables the unit to handle high in-rush currents with ample safety margin on industrial installations

APPLICATIONS

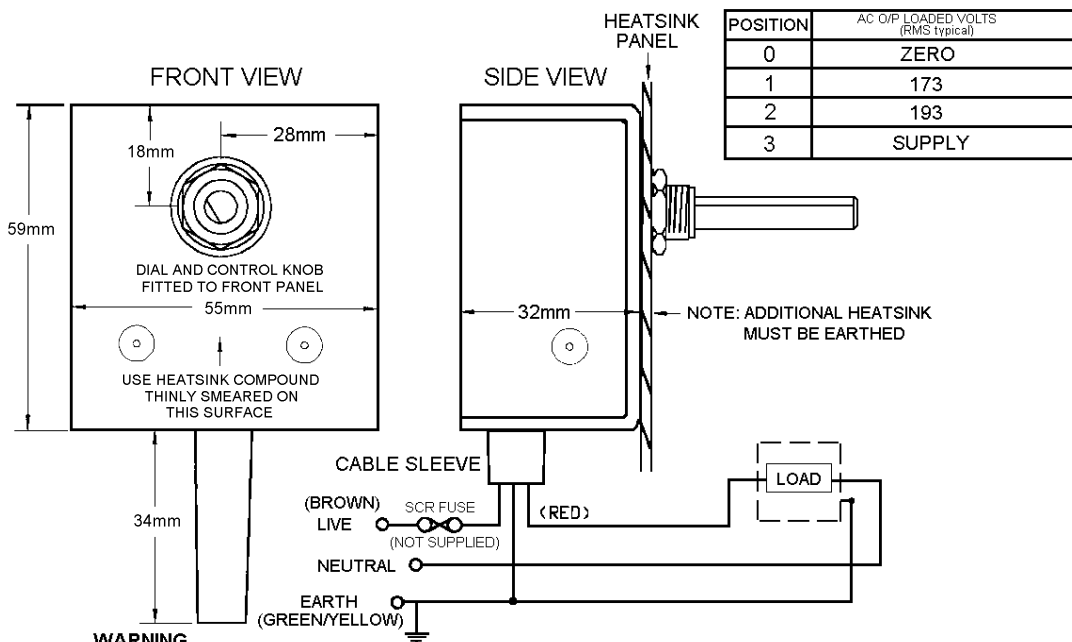
This unit is suitable for quartz lamps and conventional resistive-heating elements in series or parallel configurations. Applications include: ovens, moulders, dryers and some inductive loads (e.g. transformers and motors).

FEATURES

- Large Triac for Inrush Protection
- Three Position and Off Control.
- Single Hole Fixing
- Rugged and Compact



INSTALLATION Connections & Dimensions



WARNING
 LIVE TERMINALS - SWITCH OFF SUPPLY BEFORE COMMENCING ANY SERVICE WORK.
 FOR HEATSINK PANEL MOUNTING
 A 10mm HOLE IS REQUIRED TO ACCEPT MOUNTING BUSH.
 USE HEATSINK COMPOUND FOR EFFECTIVE THERMAL COUPLING.



UNITED AUTOMATION LTD

Southport Business Park
 Wight Moss Way
 Southport, PR8 4HQ
 ENGLAND

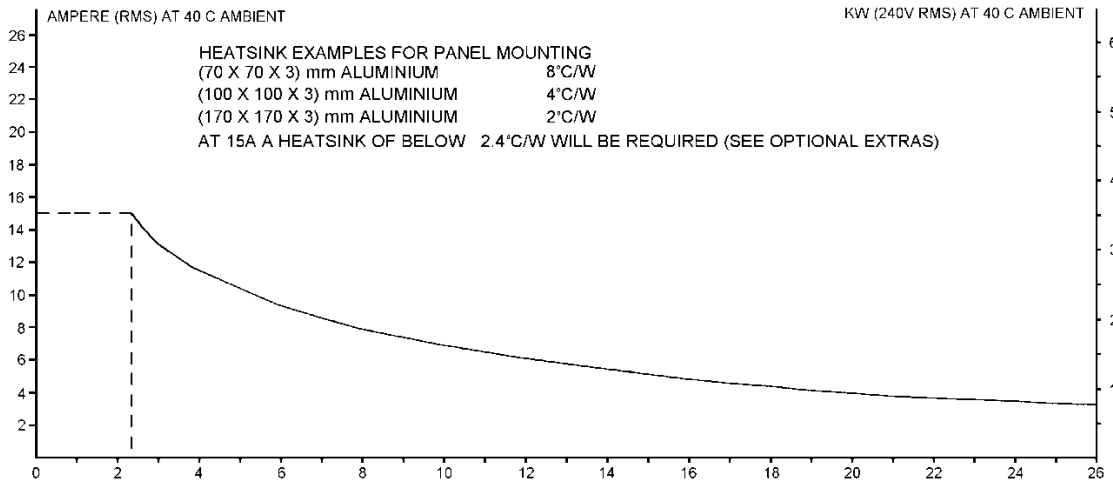
Tel: 0044 (0) 1704 – 516500
 Fax: 0044 (0) 1704 – 516501
 enquiries@united-automation.com
 www.united-automation.com



X10206 – Phase Angle Electronic Heat Switch – Up to 15A



INSTALLATION Cont. Stainless steel 15 times less thermally conductive and mild steel is typically 5 times less thermally conductive



THERMAL DATA
 WITH HEATSINK AS SPECIFIED, THE MAXIMUM LOAD CURRENT CAN BE DETERMINED.
 THIS IS THE MAXIMUM LOAD CURRENT POSSIBLE WITHOUT EXCEEDING THE DEVICE RATING.

SPECIFICATIONS

Triac limiting rms on state current	26A	Isolation voltage	2500V rms
Unit limiting rms on state current	15A	I2t limiting value for fusing	112A2s
Peak single cycle surge @ 10ms	320A	Mains supply (within 10%)	230V ac @ 50/60 Hz
Max load at 20°C ambient (without extra heatsink)	10A min	Operating current	200mA
Max unit operating temperature	65°C	Unit storage temperature range	20 to +85°C

FURTHER DIMENSIONS

Shaft diameter	6.3mm	Shaft projection from bush	30mm
Bush length	5mm	Standard cable length	400mm

FUSING

It is recommended to use semiconductor (fast-acting) type fuses or circuit breakers (semiconductor-MCB) for protection. On initial use some loads may need an increased factor of safety for unit and/or device protection (see SRA datasheet for further information).

CE MARKING

This family carries a "CE" marking. These phase angle controllers need a suitable remote filter. For more information see recommendations section and contact our sales desk. (See Declaration of Conformity)

RECOMMENDATIONS

Other documents available on request, which may be appropriate for your application:-

CODE	IDENTITY	DESCRIPTION
X10229	RFI	Filter recommendations: Addressing the EMC Directive
X10213	ITA	Interaction: Uses for phase angle and for burst fire control.
X10255	SRA	Safety requirements: Addressing the Low Voltage Directive (LVD) including, Thermal data/cooling, Live parts warning, Earth requirements and fusing recommendations
P01.1	COS	UAL Conditions of sale.

NOTE: It is recommended that installation and maintenance of this equipment should be done with reference to the current edition of the I.E.T. (formerly I.E.E.) regulations (BS7671) by suitably qualified/trained personnel. The regulations contain important requirements regarding installation and safety of electrical equipment. Specific installers should refer to local and national regulations.

ORDER CODE

State part number: **QLC 230v AC**

Optional extras include: Heatsink paste, Filter (Note: when ordering a filter, the maximum current the QLC is to be used at will be required).



UNITED AUTOMATION LTD

Southport Business Park
 Wight Moss Way
 Southport, PR8 4HQ
 ENGLAND

Tel: 0044 (0) 1704 – 516500
 Fax: 0044 (0) 1704 – 516501
 enquiries@united-automation.com
 www.united-automation.com

