



BURST FIRE FIRING TRIGGER MODULE

C/W INTEGRAL 25A POWER DEVICE

FC11BL/2

X10261

INTRODUCTION

This single phase firing module has its own built in power device, reducing wiring and fixing connections. Ideal for heating loads up to 25 Amps, when fitted onto a suitable heatsink. Burst firing operates on a 1second nominal time base. The zero crossing triggered output has a variable on / off ratio which is proportional to the manual control signal or dc input demand signal. The burst firing circuit provides trigger pulses coincident with the mains polarity crossover, ensuring complete sine wave cycles are passed through the resistive load. This prevents fast changes in load current and inhibits RFI.

APPLICATIONS

Virtually all resistive loads including ovens, hot plates, furnaces, dryer heater bands, space heating and other temperature control applications, up to 25 amps when fitted on to a suitable heatsink (1.3°C/W).

FEATURES

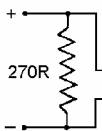
- Integral 25 amp triac fitted.
- Universal Span & Zero matching to voltage or mA control signals.
- Status LED giving output level indication.
- No external filtering required.
- Consumes under 2 Watts.
- Adjustable soft start function



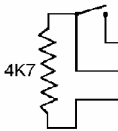
INSTALLATION

CONTROL OPTIONS FOR TERMINALS 3,4 AND 5

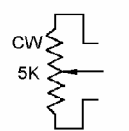
4-20mA SIGNAL



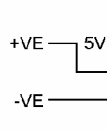
RELAY



MANUAL POT.



DC SIGNAL

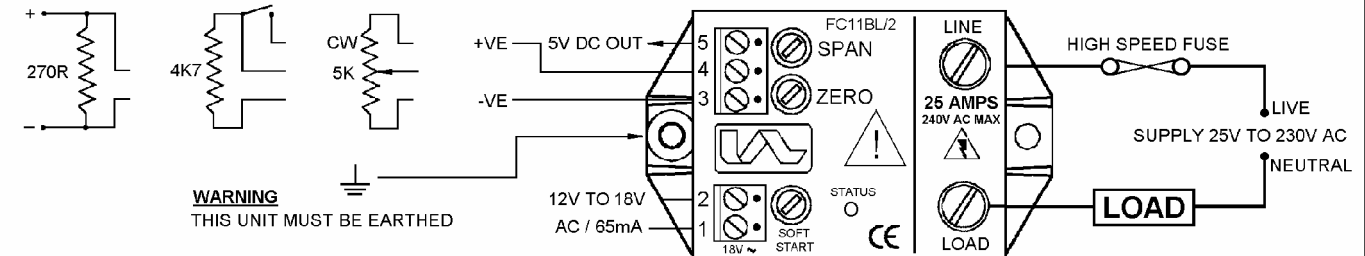


WARNING
THIS UNIT MUST BE EARTHED

DIMENSIONS AND CONNECTIONS

NOTE: AC INPUT MUST BE ISOLATED FROM SIGNAL AND BE IN PHASE WITH LINE VOLTAGE.

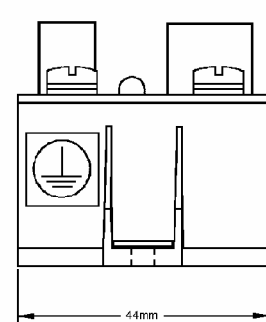
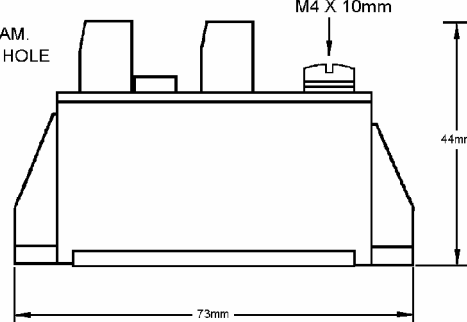
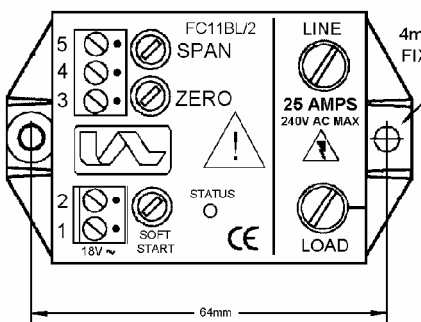
ADJUSTABLE
PHASE ANGLE
SOFT START



PLAN VIEW

SIDE VIEW

END VIEW



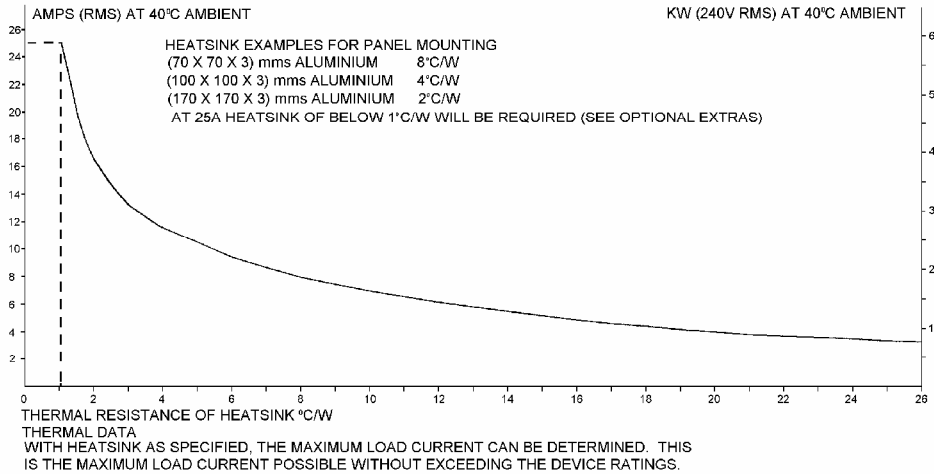
USE HEATSINK COMPOUND FOR EFFECTIVE THERMAL COUPLING

WARNING LIVE TERMINALS

SWITCH OFF MAINS SUPPLY BEFORE COMMENCING ANY SERVICE WORK

INSTALLATION

COOLING REQUIREMENTS



SPECIFICATIONS

Signal Span minimum	1.5 to 5V DC	AC input power (1 & 2)	12 to 18V AC @ 65mA
Signal Span Maximum	5 to 25V dc	Auxiliary output	5V dc
Signal Zero offset	0 to 25% of Span	Triac limiting RMS current	25A
Signal input resistance	5000 ohms ± 20%	Line Voltage	25V to 250V (50/60 Hz)
Manual potentiometer	2K, 5K or 10K	Peak one cycle surge	250 A
Cycle time base	1 sec nominal	Max. Peak voltage	600 V
I ² t for fusing (10m sec)	250 A ² s	Power consumption	1.7W
Max operating temperature	65°C	Storage temperature	0°C to +85°C
Isolation voltage	2500 Vrms	Max RMS on-state current	25A

FUSING:

It is recommending to use semiconductor (fast acting) type fuses or circuit breakers (Semiconductor - MCB) for unit protection and an appropriate fuse for unit supply (F1A). (See SRA datasheet for further information).

CE MARKING

This product family carries a "CE marking". For information see recommendation section and contact our sales desk. (See Declaration of Conformity)

RECOMMENDATION

Other documents available on request, which may be appropriate for your applications.

CODE	IDENTITY	DESCRIPTION
X10229	RFI	Filtering recommendation - addressing EMC Directive
X10213	ITA	Interaction, uses for phase angle and for burst fire control.
X10255	SRA	Safety requirements - addressing the Low Voltage Directive (LVD) including :- Thermal data/cooling ; "Live" parts warning & Earthing requirements; Fusing recommendations.
AP02/4	COS	UAL Conditions of sale

NOTE It is recommended that installation and maintenance of this equipment should be done with reference to the current edition of the I.E.E. regulations (BS7671) by suitably qualified/trained personnel. The regulations contain important requirements regarding safety of electrical equipment. (For International standards refer to I.E.C. directive I.E.C. 950).

ORDER CODE:

State part number: FC11BL/2 + Signal option.
 Optional extras include: Potentiometer, Supply transformer, and Heatsink assembly.



UNITED AUTOMATION LIMITED

1 Southport Business Park
 Kew
 Southport, PR8 4HQ
 ENGLAND

Tel: 0044 (0) 1704 – 516500 Main
 Tel: 0044 (0) 1704 – 516516 Sales
 Fax: 0044 (0) 1704 – 516501
 Enquiry@united-automation.com
 www.united-automation.com

Page No. 2 of 2 Issue 7

Date 26/07/02



This document was created with Win2PDF available at <http://www.daneprairie.com>.
The unregistered version of Win2PDF is for evaluation or non-commercial use only.